

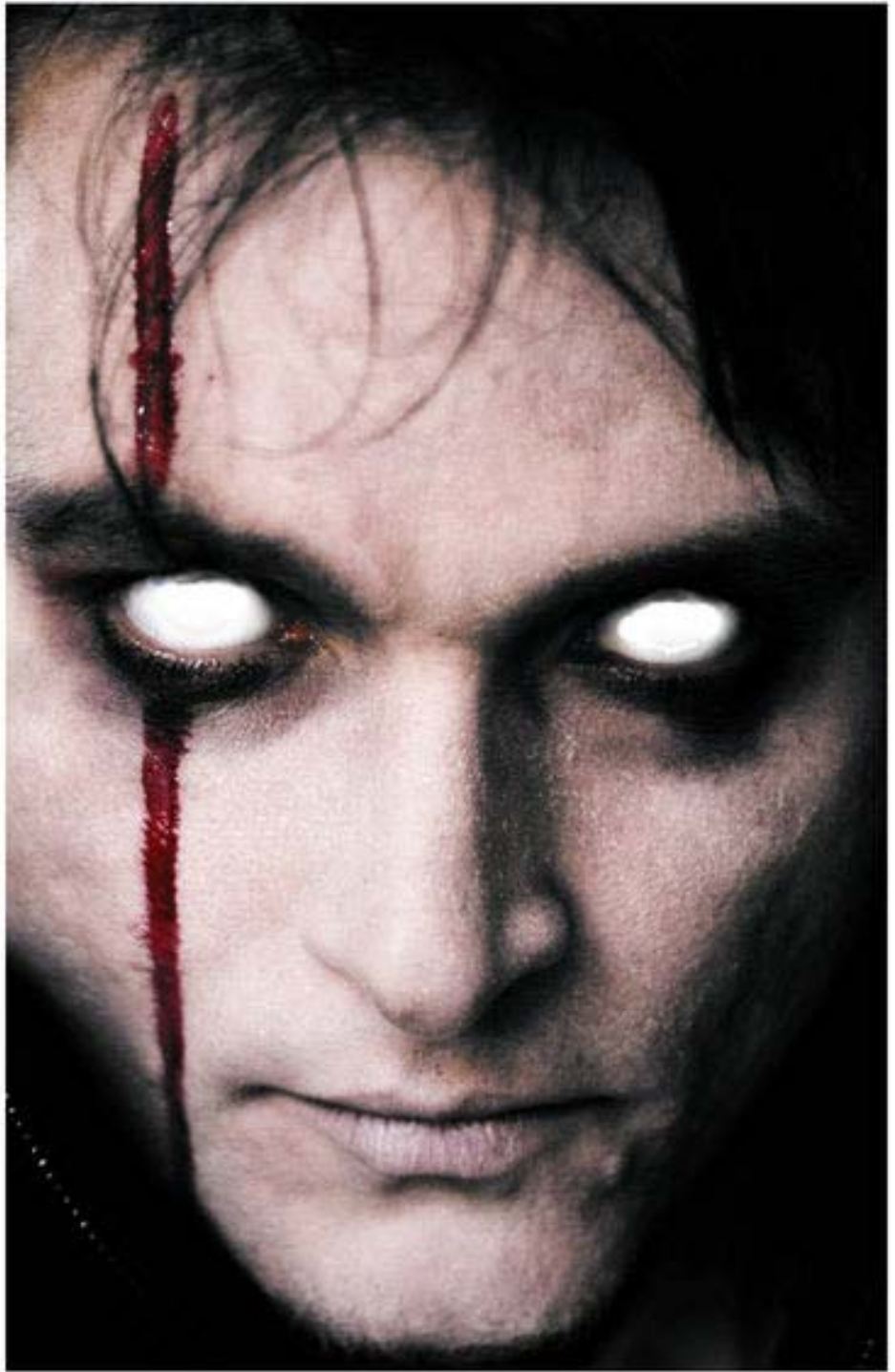
Myrddin Emrys (pronounced: Mer-thin [hard sound in the “th”] Em-bries)

- Called Enthil-Zha, which means Black Dragon
- Name means “Immortal Hawk”
- Race: Half-Elf, half vampire
- Patron Deity: Felyrina, the Shadow Dragon
- Career: Prince, leader Anla-Shak (Shadow Warriors) of Avalon
- Main Physical attributes
 - Sex: Male
 - Age: 40
 - Height: 5’3”
 - Weight: 190 lb
 - Hair: Black with pure silver shot through
 - Hangs down to knees
 - Has bangs which hang in front of face when unbound
 - When in armor is bound at base of skull with 3 inch platinum band
 - Silver shot through hair is pure silver, not grey.
 - Was effect of test of high sorcery
 - eyes: mirrors of soul sight
 - no whites, color or iris visible
 - were changed during test of High Sorcery
 - has perfect eyesight
 - At birth had golden-yellow eyes like a hawk, hence name.
 - Reflect soul of anyone looking into eyes
 - People who are inherently evil see warped twisted version of their reflection
 - People who are inherently good see a beautiful version of reflection
 - People who are exactly as they appear to be see normal reflection
 - Myrddin automatically sees what is reflected
 - Must make conscious decision to look at physical form
 - Distinguishing features
 - Long scar crossing over right eye from hairline to jaw line.
 - Given by older brother Malek during a duel
 - Myrddin does not speak of the reason for the duel unless convinced to
 - Black tribal dragon tattooed into left bicep
 - Black tribal band tattooed around right bicep
 - Minor scars on arms from battles
 - Scar from three claws down side over left ribs
 - X shaped scar over left breast
 - Tattoo of symbol of Felyrina on right shoulder blade
 - Jagged scar over right hip
 - Rope burn scar around ankles and wrists
 - Vampiric fangs grow in when angered or in battle
 - Has slightly long, pointed nails.

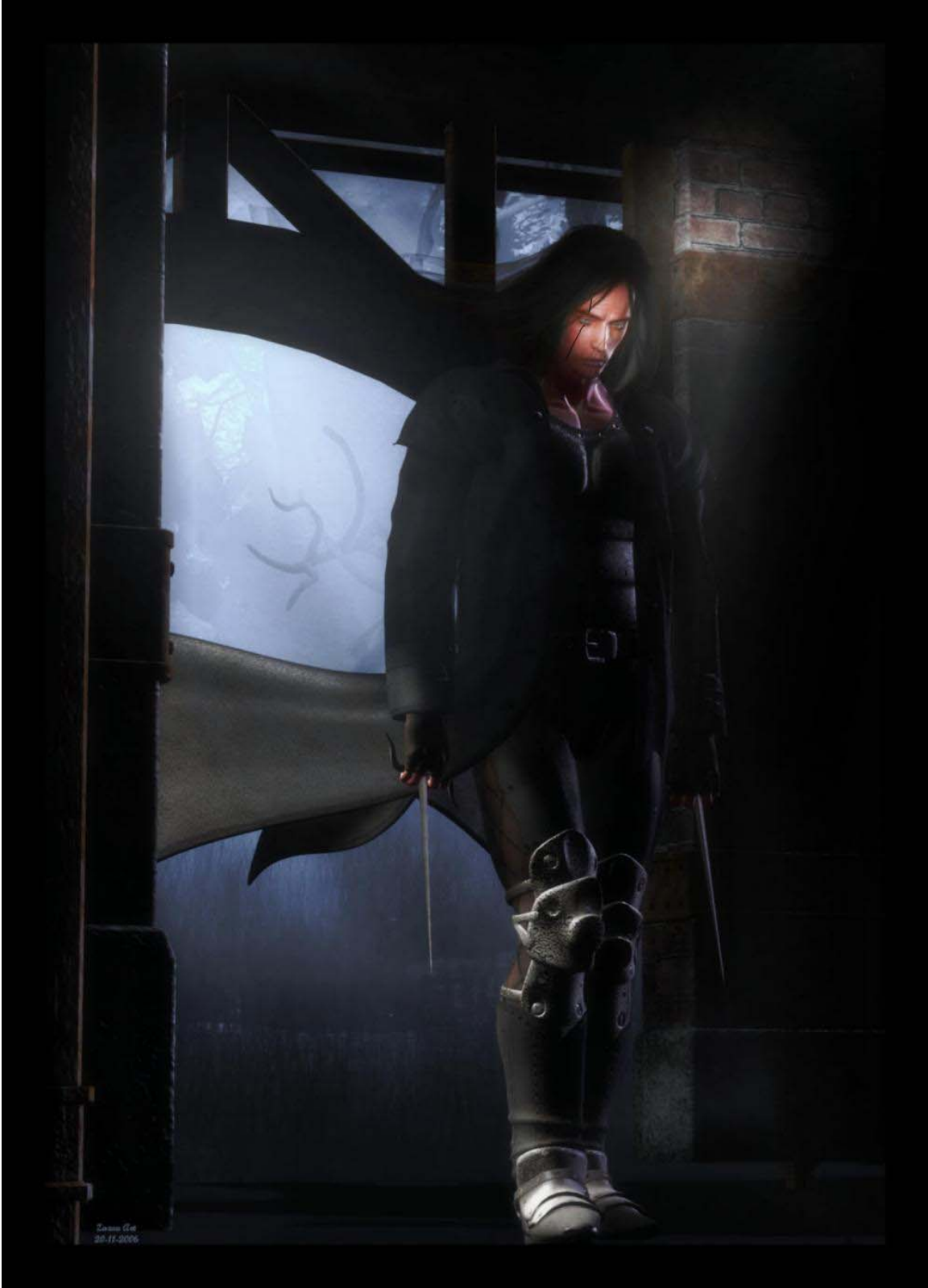
- Whenever casts fire magic, the flames are a white-blue color
 - Is a mark of patron deity
- Personality
 - Is rather cold towards others
 - Does not smile very often, but when does is more like a sardonic smirk
 - Appears to be rather brooding
 - Speaks in a low voice with an unidentifiable accent
 - Is sometimes quick to anger
 - Temper grows into seething anger
 - When angered fangs grow
 - Believes that the end justifies the means
 - Is completely willing to take whatever measures are necessary to accomplish his goals
 - Often shows no remorse for choices he has made
 - Has a slight arrogance, the heavy arrogance of his nobility tempered by years spent with common soldiers and mages
 - Does not appreciate opulence or extreme shows of wealth
 - However, dresses in finely made clothes and uses masterwork equipment.
 - Everything looks expensive and well made, without being “showy”
 - Can be seem as rather mean and ruthless
 - Suffers from mild paranoia
- Clothing
 - Everything is black
 - Shirts and breeches are generally of black silk
 - Most times clothes appear to be in a kimono/hakama pattern.
 - Wears a black haori over shirt
 - Always wears scimitars in black scabbards on left hip, and elven fighting knife on right hip unless in situation where weapons are prohibited
 - when in that situation, wears haori of Storing, with fighting knife stored in right sleeve
 - occasionally will wear a cloak instead of haori
 - Wears tinted lenses to hide eyes
 - Smoked glasses
 - Black crystal lenses with silver wire frames, no magic properties
 - Glasses of Night
 - Identical to sun lenses except allows darkvision
 - Glasses of familiar sight
 - Gold crystalline lenses allow to see through familiar’s eyes
- Jewelry
 - Wears four rings, two on each hand.
 - Two white gold signet rings, one on each hand
 - Left hand index finger is Wledig family royal crest

- Right hand ring finger is Enthil-Zha crest of a heraldic dragon
 - On right index finger is simple white gold band
 - Ring of Sustenance
 - On left ring finger is a white gold ring with a red stone set into it. Carved into the stone is two crossed scimitars
 - Is a ring of arming
 - Three simple platinum stud earrings in left ear lobe
- Armor
 - Wears black nightscale armor
 - Over nightscale is black elven mythril chain both are able to be worn while sleeping
 - Wears long leather coat over armor
 - Wears black nightscale spiked gauntlet on left arm
 - Fingerless gauntlet that extends to elbow
 - Has spikes that resemble dragon spines extending along length of gauntlet
 - Has four forward facing spikes for punching
 - Ghost Gauntlet on right arm
 - When worn becomes insubstantial with runes appearing along fingers of hand
 - Allows weapon in hand to become “ghost touched”
 - Allows hand or parts of hand to become incorporeal at will
 - On right arm wears Sword Bracer
 - Allows to form a weapon out of the air, or any element nearby
- Weapons
 - Flamehawk
 - Magical Elven Scimitar
 - Flaming
 - Blurring
 - Is an intelligent weapon
 - Blue flames dance along blade when enflamed
 - Will only allow Myrddin to use it
 - “shadow vagabond” quirk
 - When drawn, Myrddin’s shadow disappears
 - Second Elven scimitar
 - Worn on left hip, with Flamehawk, in a pseudo daisho set manner
 - Elven Great Scimitar
 - Hung from back or saddle
 - Elven Fighting Knives
 - One in scabbard on right hip, other stored in Hakama’s sleeve
 - Elven Composite shortbow
 - Uses a steel string, and is enchanted so that arrows will shoot through the first target to a target behind
 - Efficient Quiver
 - Magic stores up to 60 arrows, 18 javelins, and 6 bows/spears

- Black leather back quiver
- Keeps a dagger in his right boot



Myrddin Emrys



armored